

Hopeful Annie

Designed by Emily Franz of Hootin Annies • www.hootinannies.com



Supplies:

- Fabric:
 - 1/3 yard of pink calico
 - 1/4 yard of muslin
 - 1/4 yard of pink-and-white, small-striped fabric for legs
 - 5" square scrap of dirty-cream wool for collar and cat tail
 - Scrap of osnaburg or other woven cream fabric for dress banner and cat
- 1 yard of pink wool/mohair yarn*
- DMC embroidery floss in Light Shell Pink, # 223, and Very Dark Hazelnut Brown, #869
- Iron
- Instant coffee
- Hot water and large bowl
- Scrap of pink rickrack for cat collar
- Large-eye sewing needle
- Scissors
- Straight pins
- Ecu cotton-covered polyester thread
- Small button for collar front
- Fiberfill
- Sewing machine and thread
- Pencil
- Baking sheet
- Oven
- Tracing and transfer paper
- Parchment paper or foil
- Foam brush or paper towels
- Chopstick or other tool for stuffing

*Available from Hootin Annies:
www.hootinannies.com.

Pattern: See pages 2–5

Instructions:

1. **Staining fabric** - In bowl, mix one cup of hot water with three tablespoons instant coffee. Using foam brush or paper towels, blot coffee mixture over muslin and striped fabric. Place parchment paper or foil on

Country Sampler.com

baking sheet. Lay fabric flat and bake in 250-degree oven for 15 minutes or until dry. *Note: Do not leave fabric unattended.*

2. Cutting out patterns - *Note: Tracing line is sewing line. Cut out pattern pieces 1/4" from tracing line.* Cut out all pattern pieces. Cut two bodies and four arms from muslin. Cut four legs from striped fabric. Cut two cats from osnaburg. Cut one banner from osnaburg. Cut one collar and one cat tail from dirty-cream wool. Cut two 8 1/2" x 19" pieces for skirt from calico. Cut one bodice pattern on fold from calico.

3. Sewing - *Note: Double stitch seams to prevent seams from bursting.* With right sides together, machine sew two arms together, leaving opening at top. Repeat for remaining arm. Clip curves and turn right side out. Stuff hands and lower arms firmly using chopstick to push stuffing to bottom. Stop stuffing at elbow line. Using doubled length of ecru thread and a running stitch, hand sew across line. Stuff upper arm softly, stopping 1" from opening.

4. With right sides together, machine sew two leg pieces together, leaving opening at top. Repeat for remaining leg. Clip curves and turn right side out. Stuff legs firmly to knee line. Using doubled length of ecru thread, hand-sewing needle and a running stitch, sew across line. Add a little stuffing above stitching. Stitch again 1/2" from knee line. Stuff upper leg softly, stopping 1" from top.

5. With right sides together, sew body pieces together, leaving a 2" opening at bottom. Clip curves and turn right side out. Stuff body firmly. Using doubled length of ecru thread and sewing needle, hand stitch opening closed. Hand stitch legs and arms to body.

6. Face - Using pencil and pattern as a guide, draw details lightly on face. Going through back of head, satin stitch nose with three strands of Light Shell Pink floss. Stitch eyes and mouth with two strands of Very Dark Hazelnut Brown floss. See photo.

7. Hair - Cut four pieces of yarn about 3" long. Using a shorter piece of yarn, knot 3"

pieces together in middle. Using three strands of Light Shell Pink floss, stitch hair to top of head through knot at seam. See photo.

8. Clothes - With right sides together, machine sew skirt pieces together. Machine baste around skirt top. With right sides together, machine sew bodice pieces together, leaving openings for neck, arms and body. Clip curves. With right sides together, match seams and pin bodice to skirt, pulling basting stitches to gather. Machine sew bodice and skirt together. Press side seams open and turn right side out.

9. Turn skirt hem under 1/4" and press. Using doubled length of ecru thread, hand sew hem with a primitive running stitch. Repeat for sleeves.

10. Draw ribbon lightly on bottom right of collar front with pencil. Using three strands of Light Shell Pink floss, backstitch over pencil lines. See photo. Using ecru thread, tack collar to front and back of dress. Attach button to middle front of collar with ecru thread.

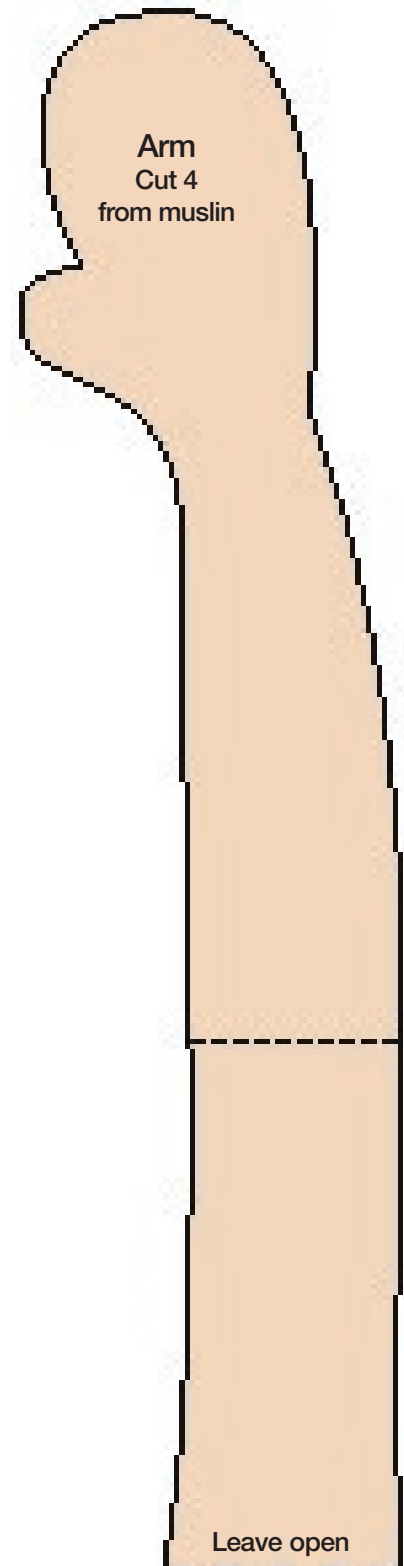
11. Using pencil, write HOPE lightly on banner, and draw one ribbon on each side of banner. See photo. Backstitch over letters using two strands of Very Dark Hazelnut Brown floss. Backstitch ribbons using three strands of Light Shell Pink floss. Center banner over skirt front 1/2" above hem and pin. Using ecru thread and a primitive running stitch, attach banner to skirt. Place dress on doll body.

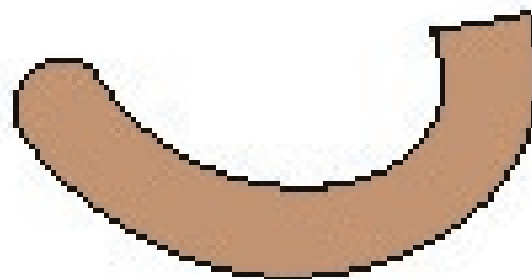
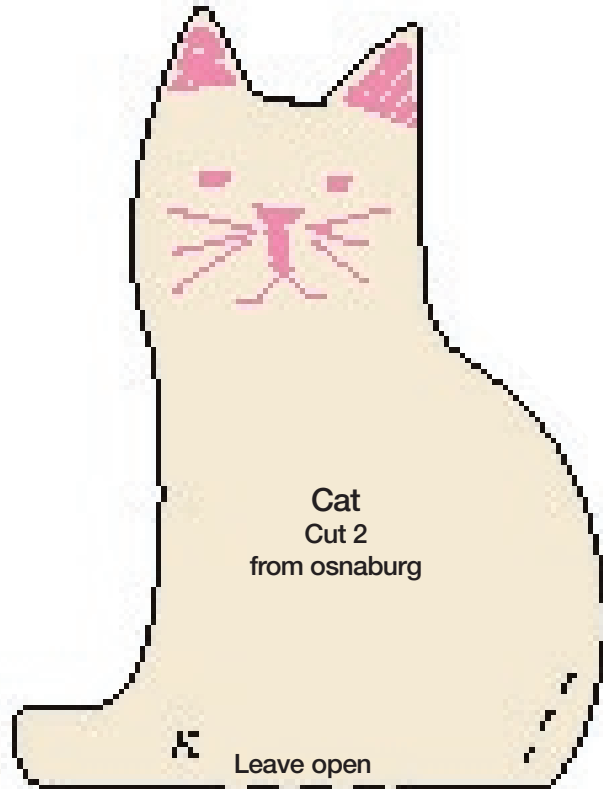
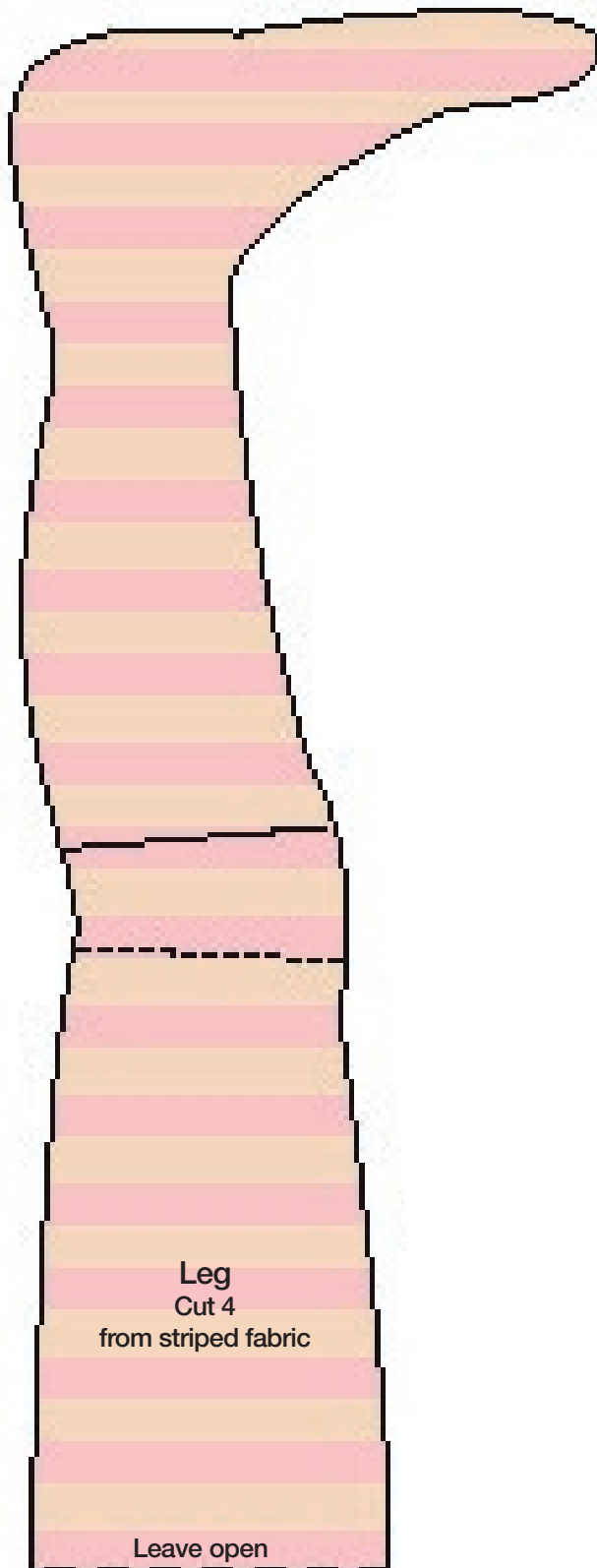
12. Cat - With wrong sides together, machine sew cat pieces together, leaving 1" opening at bottom. Clip curves and turn right side out. Stuff firmly. Hand stitch opening closed with ecru thread. Tack wool tail at end and near tip.

13. Satin stitch cat's ears, nose and eyes with two strands of Light Shell Pink floss. Backstitch mouth with two strands of Light Shell Pink floss. Using one strand of Light Shell Pink floss, straight stitch whiskers. See photo. Wrap rickrack around neck and tack in back with ecru thread.

14. Cross doll's arms and position cat behind arms. See photo. To secure in place, starting

in back of cat, push needle and doubled length of ecru thread through cat, one arm and underside of other arm. *Note: Do not go through to front.* Push needle back through arms and cat and tie off thread.





Tail
Cut 1 from dirty-cream wool

Country Sampler.com

